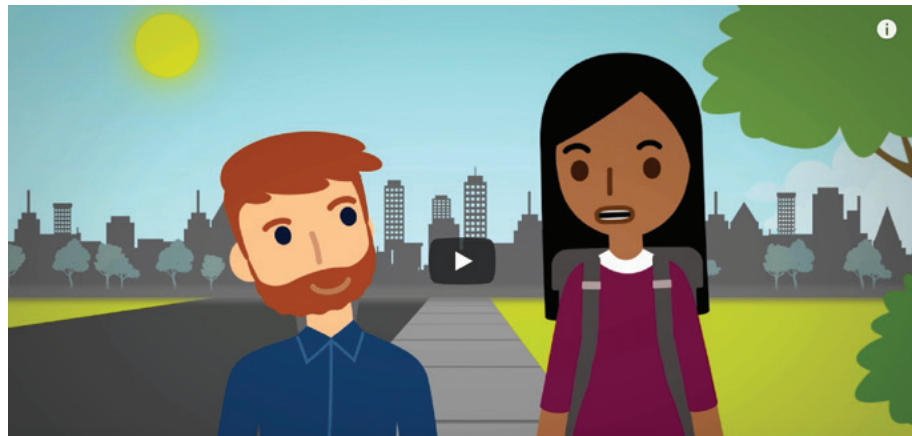


Pre-Module Assignment 1

SAMARA CENTRE FOR DEMOCRACY




 **Video: How to be an Everyday Political Citizen from the Samara Centre for Democracy**

Complete this assignment before the next in-person module.

Visit the Samara Centre for Democracy:

 <https://www.samaracanada.com/>

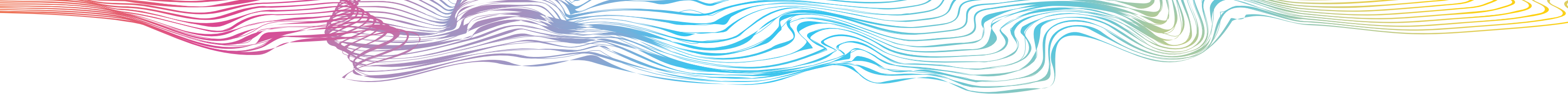
You will be presenting your answers to your peers. This assignment may require some time to complete as it is meant to get you to think and reflect about policy in more practical ways. You may want to consider consulting people in your community, co-workers, friends, and/or family to make it even more relevant to the realities you and your communities are facing.

The Samara Centre for Democracy¹ has developed a video to encourage people to get involved in advocating or organizing to resolve a particular issue. Watch the following video on “How to be an Everyday Political Citizen from the Samara Centre for Democracy” (4 minutes) and answer the questions:  https://www.youtube.com/watch?time_continue=21&v=6v1H9vZTz18

¹ The Samara Centre for Democracy is a non-partisan charity dedicated to strengthening Canada’s democracy, making it more accessible, responsive, and inclusive. <https://www.samaracanada.com/home>

1. **Write down ONE issue that affects you and/or your community directly.** How does it affect you? Why is it a challenge? Who else is affected?

2. **When thinking about solutions or recommendations to issues that affect more than just you, it is important to think about those voices or perspectives that might not be included in the solution. What are some groups or populations who are ALSO affected by the issue you have identified?** Who would you have liked to be able to consult in order to give you a different perspective about your issue?



3. What do you think could be some possible solutions to the challenge identified in the first question?

Dream big (don't limit yourself)—write down at least two (but list as many as you'd like) possible solutions or ways to address the issue.

4. Can you identify groups of people or individuals who would support some of your solutions? Why would they support it? How do you think you could get them on board?

5. There might be individuals in your family or community who disagree or are not aware of the ways this issue might affect them. How would you talk to them about the issue? How would you present the issue? How would you get them to care about the issue? Try to make your arguments as factual or logical as possible.

Notes